



# HSP A9 Polyclonal Antibody

<b>Catalog No</b>	YP-Ab-03917
<b>Isotype</b>	IgG
<b>Reactivity</b>	Human;Mouse;Rat;Monkey
<b>Applications</b>	WB;IHC;IF;ELISA
<b>Gene Name</b>	HSPA9
<b>Protein Name</b>	Stress-70 protein mitochondrial
<b>Immunogen</b>	The antiserum was produced against synthesized peptide derived from human GRP75. AA range:630-679
<b>Specificity</b>	HSP A9 Polyclonal Antibody detects endogenous levels of HSP A9 protein.
<b>Formulation</b>	Liquid in PBS containing 50% glycerol, 0.5% BSA and 0.02% sodium azide.
<b>Source</b>	Polyclonal, Rabbit,IgG
<b>Purification</b>	The antibody was affinity-purified from rabbit antiserum by affinity-chromatography using epitope-specific immunogen.
<b>Dilution</b>	Western Blot: 1/500 - 1/2000. Immunohistochemistry: 1/100 - 1/300. Immunofluorescence: 1/200 - 1/1000. ELISA: 1/40000. Not yet tested in other applications.
<b>Concentration</b>	1 mg/ml
<b>Purity</b>	≥90%
<b>Storage Stability</b>	-20°C/1 year
<b>Synonyms</b>	HSPA9; GRP75; HSPA9B; Stress-70 protein; mitochondrial; 75 kDa glucose-regulated protein; GRP-75; Heat shock 70 kDa protein 9; Mortalin; MOT; Peptide-binding protein 74; PBP74
<b>Observed Band</b>	75kD
<b>Cell Pathway</b>	Mitochondrion . Nucleus, nucleolus .
<b>Tissue Specificity</b>	B-cell,Brain,Cajal-Retzius cell,Colon carcinoma,Fetal brain
<b>Function</b>	function:Implicated in the control of cell proliferation and cellular aging. May also act as a chaperone.,PTM:Phosphorylated upon DNA damage, probably by ATM or ATR.,similarity:Belongs to the heat shock protein 70 family.,subunit:Interacts with FXN.,
<b>Background</b>	This gene encodes a member of the heat shock protein 70 gene family. The encoded protein is primarily localized to the mitochondria but is also found in the endoplasmic reticulum, plasma membrane and cytoplasmic vesicles. This protein is a heat-shock cognate protein. This protein plays a role in cell proliferation, stress response and maintenance of the mitochondria. A pseudogene of this gene is found on chromosome 2.[provided by RefSeq, May 2010],



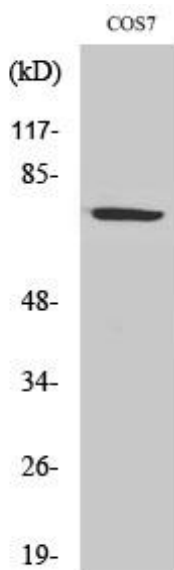
**matters needing attention**

Avoid repeated freezing and thawing!

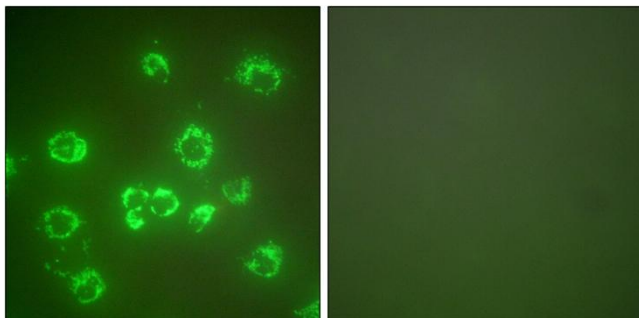
**Usage suggestions**

This product can be used in immunological reaction related experiments. For more information, please consult technical personnel.

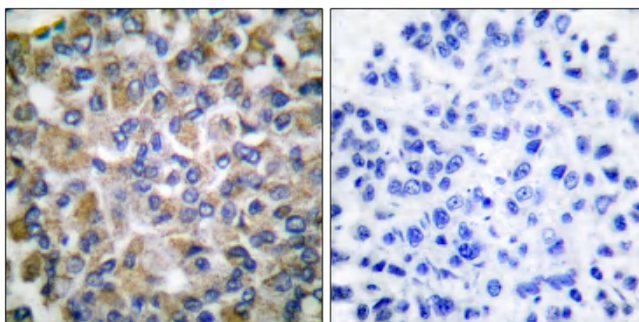
## Products Images



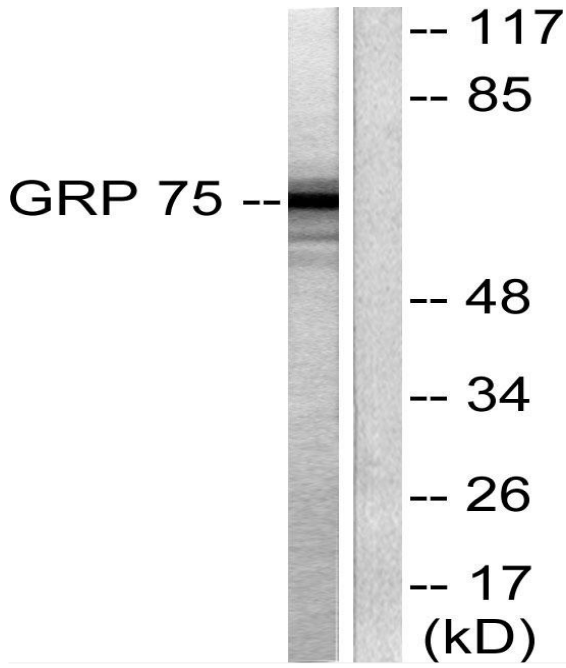
Western Blot analysis of COS7 cells using HSP A9 Polyclonal Antibody diluted at 1:2000



Immunofluorescence analysis of COS7 cells, using GRP75 Antibody. The picture on the right is blocked with the synthesized peptide.



Immunohistochemistry analysis of paraffin-embedded human breast carcinoma tissue, using GRP75 Antibody. The picture on the right is blocked with the synthesized peptide.



Western blot analysis of lysates from COS7 cells, using GRP75 Antibody. The lane on the right is blocked with the synthesized peptide.